

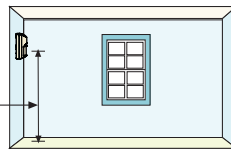
Blue Line Gen2  
Pet Friendly TriTech  
Motion Detector  
ISC-BDL2-WP12, ISC-BDL2-WP6



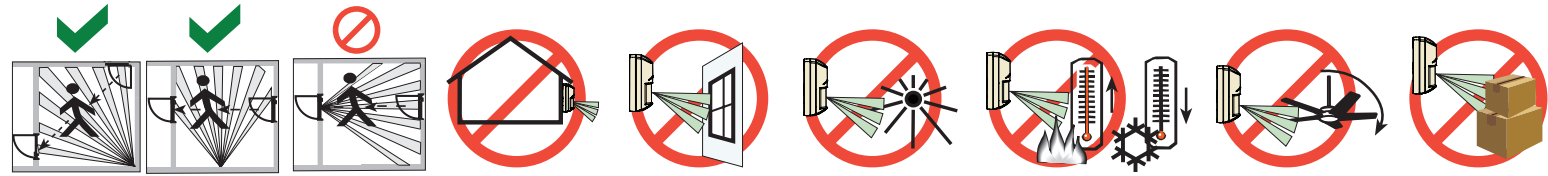
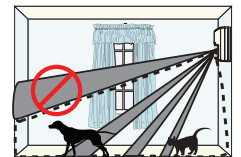
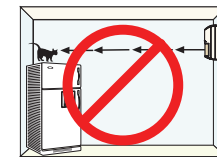
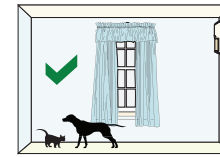
en Installation Guide

Optional Brackets:  
B328, B338, B335

2,2 m - 2,75 m  
(7.5 ft - 9 ft)  
Recommended:  
2,2m (7.5 ft)



Pet Friendly  
≤ 45 kg (100 lb)



Changes or modifications not expressly approved by Bosch Security Systems, Inc. can void the user's authority to operate the equipment.

UL/C-UL  
Perform Walk Test at least once a year.  
Pet immunity not tested by UL/C-UL.  
Use only a Listed limited-power source.  
The Listed control unit or a Listed burglary power supply must provide 4 hours (40 mAh) of standby power.  
Install the unit in accordance with National Electrical Code NFPA 70 and Part 1 of the Canadian Electrical code CSA C22.1.  
Adjust the microwave range control, if necessary, to achieve maximum range.

SELV  
Connect all wiring to a safety extra-low voltage (SELV) circuit only.  
IP30 IK04 (EN 60529, EN 62262)

Ligue todas as cablagens apenas a um circuito de segurança de tensão extra baixa (SELV).

Conecte el cableado únicamente a un circuito de seguridad para voltajes muy bajos (SELV).

Alle Drähte sind ohne Ausnahme an Niederspannung anzuschließen.

ISC-BDL2-WP12G, ISC-BDL2-WP6G (10.525 GHz)

ISC-BDL2-WP12H (10.588 GHz)

Sluit alle bedrading uitsluitend aan op een circuit met een extra lage veiligheidsspanning.

Prenez soin de connecter tous les câbles à un circuit à très basse tension de sécurité (TBTS).

Collegare tutti i cavi esclusivamente a un circuito SELV (circuito di sicurezza a bassissima tensione).

-30°C to +55°C  
(-20°F to +130°F)

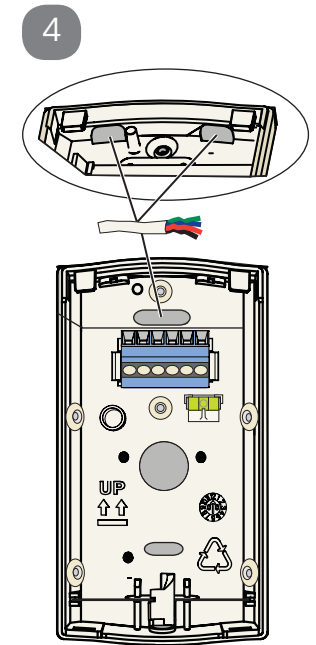
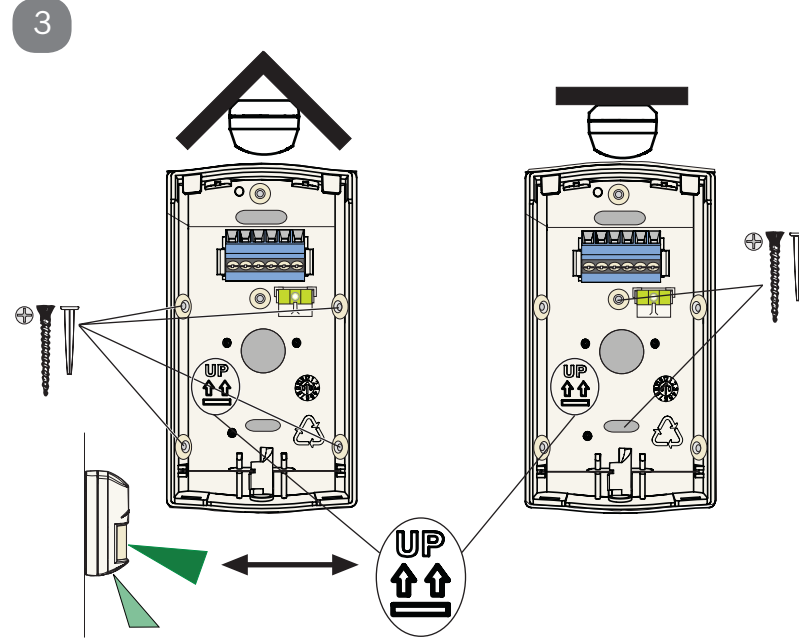
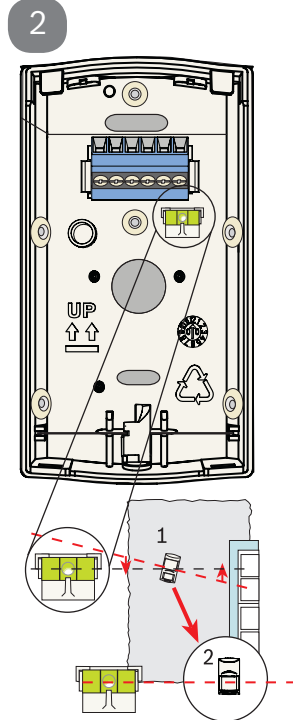
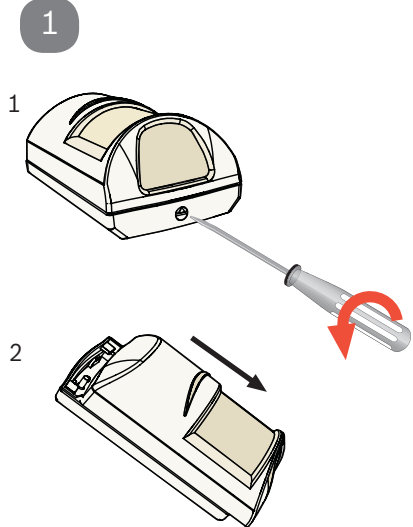


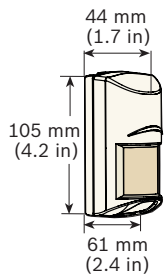
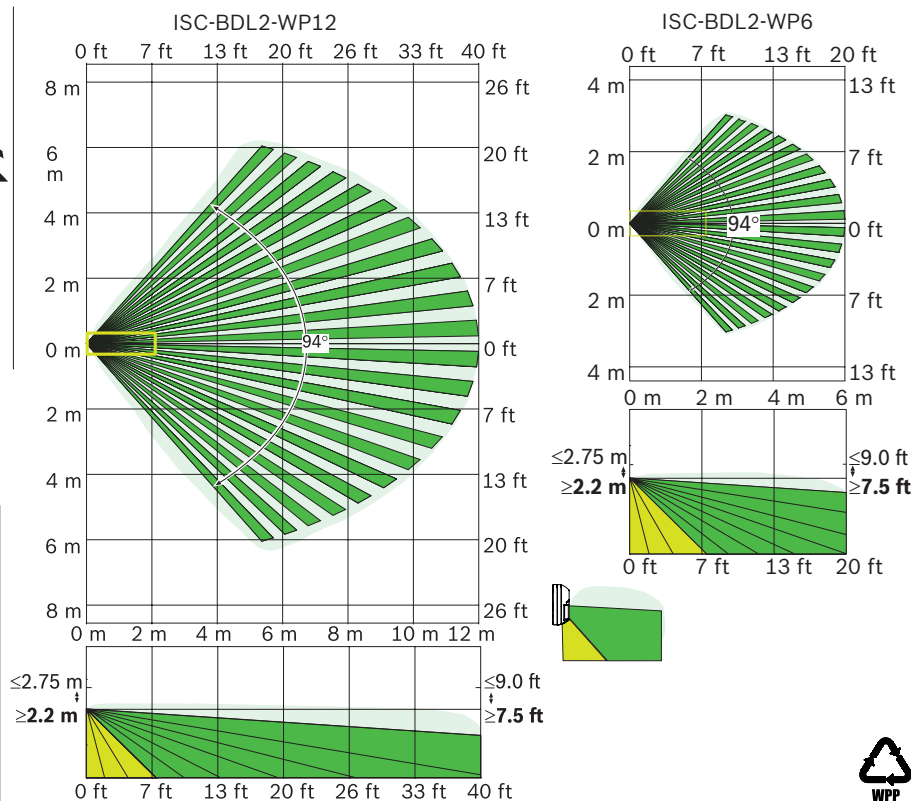
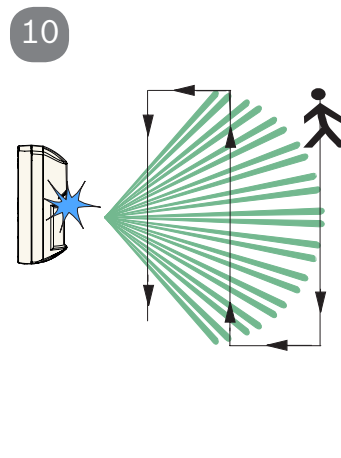
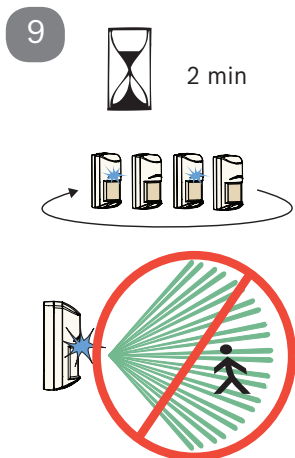
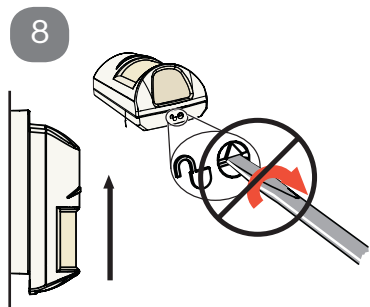
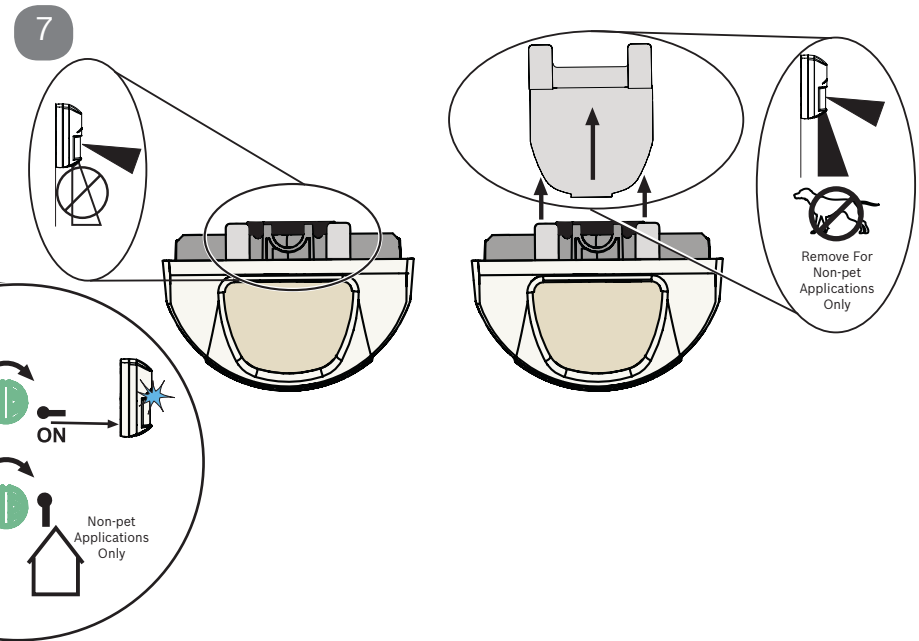
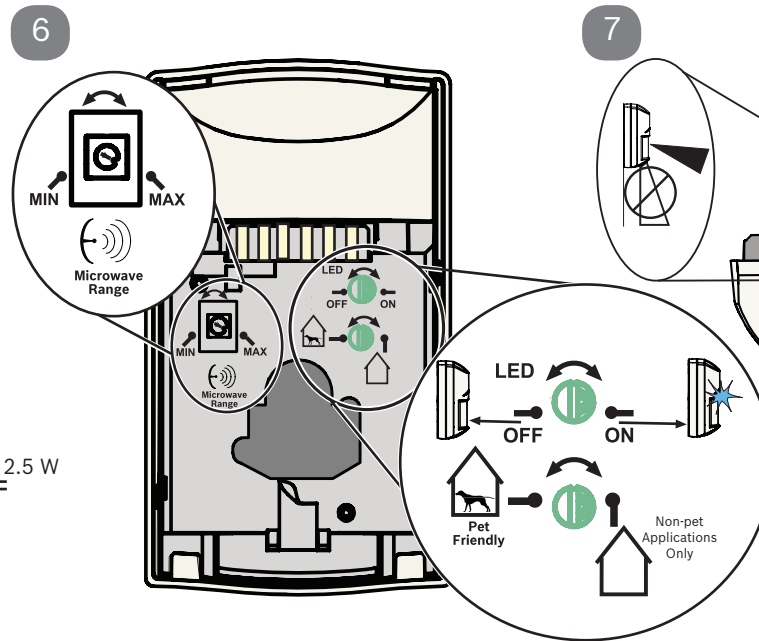
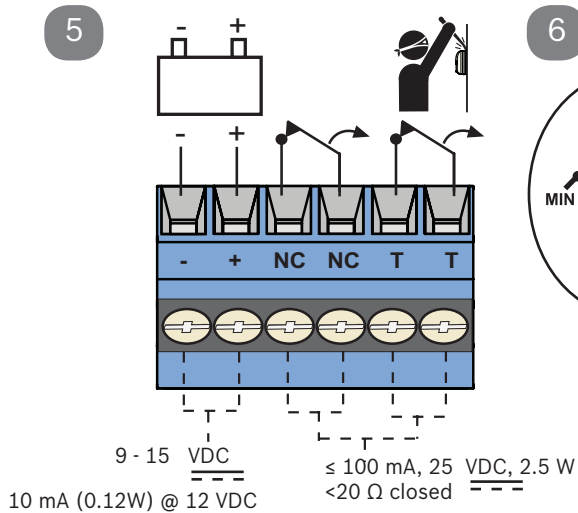
UL/C-UL Listed installations, the temperature range is 0°C to +49°C (+32°F to +120°F)



0 - 95% Relative Humidity  
(0 - 85% UL/C-UL installations)

För svensk installationsanvisning se [www.boschsecurity.se](http://www.boschsecurity.se).





? → [www.boschsecurity.com](http://www.boschsecurity.com)

Reading Bosch Security Systems, Inc. Product Date Codes  
For Product Date Code information, refer to the  
Bosch Security Systems, Inc. Web site at:  
<http://www.boschsecurity.com/datecodes/>.

**ANATEL**  
Modelo: ISC-BDL2-WP12G  
2140-10-1855  
(01) 07891009522203

**ANATEL**  
Modelo: ISC-BDL2-WP6G  
2140-10-1855  
(01) 07891009522210

Este equipamento opera em caráter secundário, isto é, não tem direito à proteção contra interferência prejudicial, mesmo de estações do mesmo tipo e não pode causar interferência a sistemas operando em caráter primário.

